

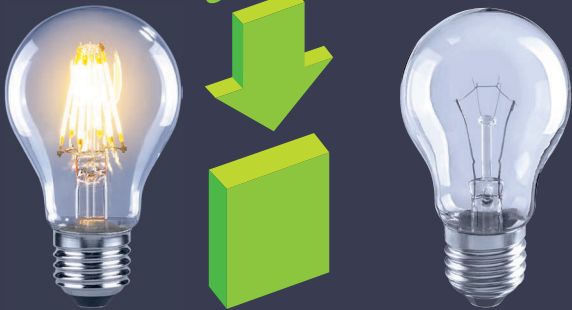
Special LED Lamps

Durabulb
Emergency Bulb
Dim to Warm
Bi Voltage
Dichroic Reflector
LED Tube

Save 85-90% energy compare with incandescent bulbs



90%
SAVING



Original
Electricity
Consumption



Step down your carbon footprint by using Filament led bulbs



Incandescent		Filament LED				
25W	=	2W	—	460 kWh	—	299 kg ——— 13
40W	=	4W	—	720 kWh	—	468 kg ——— 20
60W	=	6W	—	1080 kWh	—	702 kg ——— 30
75W	=	8W	—	1340 kWh	—	871 kg ——— 37
100W	=	12W	—	1760 kWh	—	1144 kg ——— 49

Lifetime of Filament LED = 20000hr

CO2 emission = 0.65kg/ kWh

CO2 intake of a tree = 23kg/year



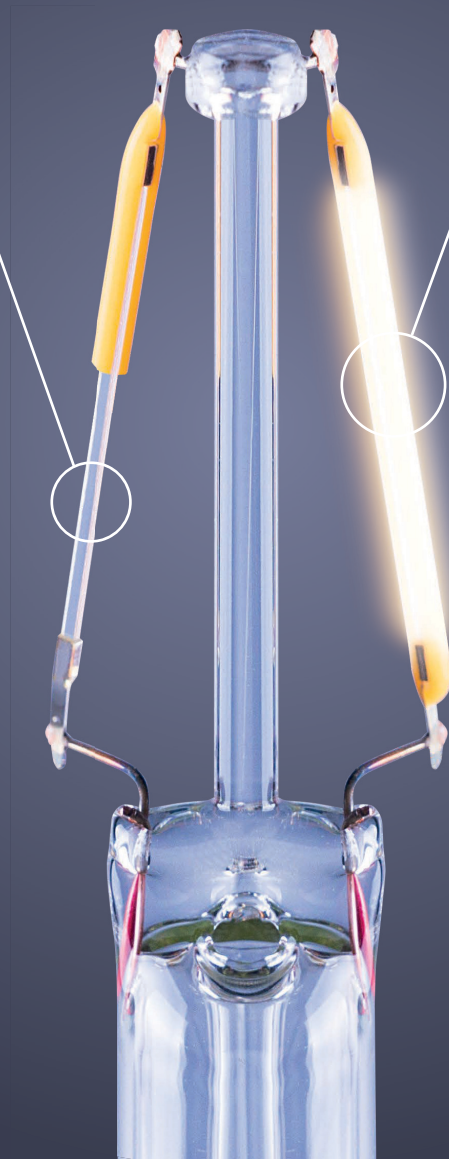
Filament LED - Chip on Cord Technology

LED Chip bonded on pure synthetic sapphire substrate

- Level 9 on Mohs hardness scale
- Provide the best shock resistance
- High transparency, the best lumen output
- Thermal expansion ratio similar as LED chip



PATENTED TECHNOLOGY
Patent protected: EP2535640B1



Technical Advantages

- Long lifespan (20000hrs)
- The highest energy efficiency (A++)
- High luminous efficacy (130lm/W)
- High colour rendering
- Mercury free
- Zero UV emission
- Save 85-90% energy compare with incandescent bulbs

Product features

- Direct replacement of incandescent bulbs
- Various colour temperatures available
- 360° light distribution angle
- Excellent heat disperse
- Environmental friendly





A++
Energy Efficiency



360°
Beam Angle



Dimmable



Direct replacement of incandescent

Luxtek[®]





A19
Durabulb

LED Durabulb

Technical Advantages

- Long lifespan (10000hrs)
- High luminous efficacy (90lm/W)
- High colour rendering
- Mercury free
- Zero UV emission
- Save 85-90% energy compare with incandescent bulbs

Product features

- Light plastic shield
- Can resist from damage of normal drop
- Less protection in packaging is required
- Direct replacement of incandescent bulbs
- Various colour temperatures available
- Excellent heat disperse
- Environmental friendly



A19DB



Impact and shatter resistant design

Dimmable version 100-140V

Model No.	Type	Lumen	Wattage	Incandescent Equivalent	Voltage	Size (mm)	Base
A19DB 7.5W DB	A19DB	700 lm	7.5 W	40 W	100-140V	Ø60 X 105	E26



Tolerance of product dimension
Length ± 2mm / Diameter ± 0.5mm



A60 Emergency Bulb

Filament LED Lamps Emergency Bulb

Technical Advantages

- Long lifespan (20000hrs)
- The highest energy efficiency (A++)
- High luminous efficacy (130lm/W)
- High colour rendering
- Mercury free
- Zero UV emission
- Save 85-90% energy compare with incandescent bulbs

Product features

- Built in rechargeable Lithium-ion battery
- Can operates up to 2 hours in case of power outage
- Direct replacement of incandescent bulbs
- Various colour temperatures available
- 360° light distribution angle
- Excellent heat disperse
- Environmental friendly



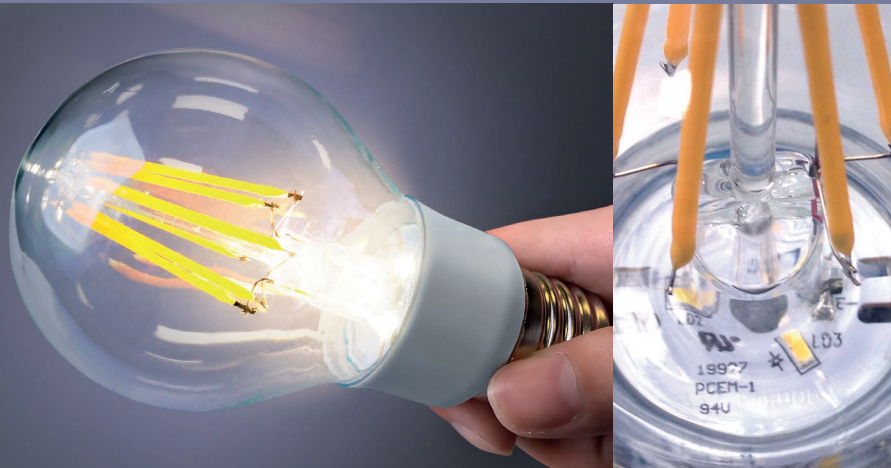
A60C EM

LED Emergency Bulb.

Built in Li-Ion rechargeable battery and LED module, it operates up to 2 hours in case of power outage.



Built in 2 hours
Li-Ion battery



Dimmable version 220-240V

Model No.	Type	Lumen	Wattage	Incandescent Equivalent	Filament	Voltage	Size (mm)	Base
A60C 5W EM	A60C EM	640 lm	5 W	50 W	4 pcs	220-240V	Ø60 X 114	E27
A60C 6W EM	A60C EM	810 lm	6 W	60 W	6 pcs	220-240V	Ø60 X 114	E27



Energy Class



20000 hrs



REACH ErP RoHS

Tolerance of product dimension Length ± 2mm / Diameter ± 0.5mm



A19 / A60 / G45 / C35
Dim to Warm

Filament LED Lamps
Dim to Warm series

Technical Advantages

- Long lifespan (20000hrs)
- The highest energy efficiency (A+)
- High luminous efficacy (105lm/W)
- High colour rendering
- Mercury free
- Zero UV emission
- Save 85-90% energy compare with incandescent bulbs

Product features

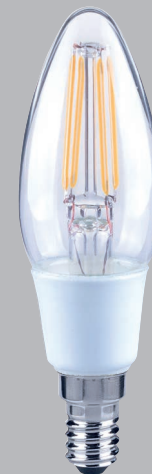
- The more is dimmed the warmer the colour
- Provide different ambience from bright to warm
- Direct replacement of incandescent bulbs
- Various colour temperatures available
- 360° light distribution angle
- Excellent heat disperse
- Environmental friendly



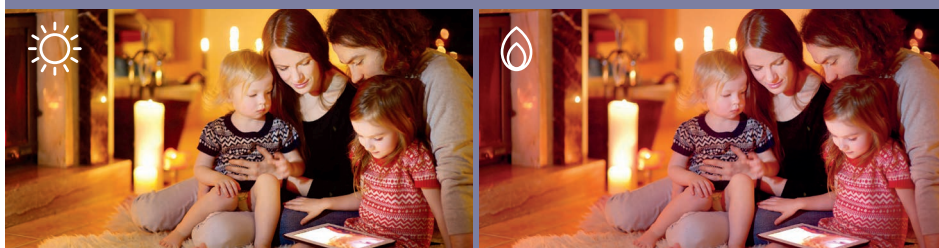
A19C DTW
A60C DTW



G45C DTW



C35C DTW



Dimmable version 220-240V

Model No.	Type	Lumen	Wattage	Incandescent Equivalent	Filament	Voltage	Size (mm)	Base
A60C 4.5W DTW	A60C DTW	430 lm	4.5 W	37 W	4 pcs	220-240V	Ø60 X 114	E27
A60C 7W DTW	A60C DTW	750 lm	7 W	56 W	4 pcs	220-240V	Ø60 X 114	E27
C35C 4.5W DTW	C35C DTW	430 lm	4.5 W	37 W	4 pcs	220-240V	Ø35 X 118	E14
G45C 4.5W DTW	G45C DTW	430 lm	4.5 W	37 W	4 pcs	220-240V	Ø45 X 108 Ø45 X 108	E14 E27

Dimmable version 100-140V

Model No.	Type	Lumen	Wattage	Incandescent Equivalent	Filament	Voltage	Size (mm)	Base
A19C 7W DTW	A19C DTW	810 lm	7 W	60 W	4 pcs	100-140V	Ø60 X 112	E26



Energy Class



20000 hrs



Tolerance of product dimension Length ± 2mm / Diameter ± 0.5mm

REACH

ErP

RoHS



G80 / G95 / G120 / ST64
Dim to Warm

Filament LED Lamps
Dim to Warm series

Technical Advantages

- Long lifespan (20000hrs)
- The highest energy efficiency (A+)
- High luminous efficacy (105lm/W)
- High colour rendering
- Mercury free
- Zero UV emission
- Save 85-90% energy compare with incandescent bulbs

Product features

- The more is dimmed the warmer the colour
- Provide different ambience from bright to warm
- Direct replacement of incandescent bulbs
- Various colour temperatures available
- 360° light distribution angle
- Excellent heat disperse
- Environmental friendly



G80C DTW



G95C DTW



G120C DTW



ST64C DTW

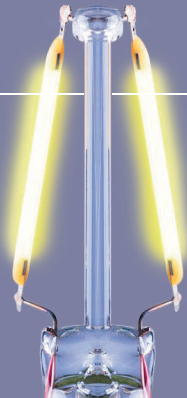


Dimmable version 220-240V

Model No.	Type	Lumen	Wattage	Incandescent Equivalent	Filament	Voltage	Size (mm)	Base
G80C 7W DTW	G80C DTW	750 lm	7 W	56 W	4 pcs	220-240V	Ø80 X 137	E27
G95C 7W DTW	G95C DTW	750 lm	7 W	56 W	4 pcs	220-240V	Ø95 X 157	E27
G120C 7W DTW	G120C DTW	750 lm	7 W	56 W	4 pcs	220-240V	Ø125 X 190	E27
ST64C 7W DTW	ST64C DTW	750 lm	7 W	56 W	4 pcs	220-240V	Ø64 X 164	E27



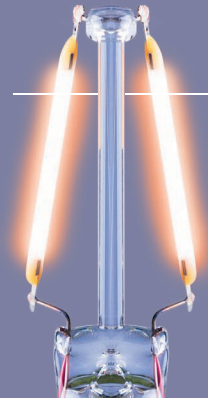
2700K



Dim to Warm



1800K



Energy Class



20000 hrs



REACH

ErP

RoHS

Tolerance of product dimension Length ± 2mm / Diameter ± 0.5mm



Filament LED Lamps Bi Voltage series

- Technical Advantages
- Long lifespan (20000hrs)
 - The highest energy efficiency (A++)
 - High colour rendering
 - Mercury free
 - Zero UV emission
 - Save 85-90% energy compare with incandescent bulbs

- Product features
- Direct replacement of incandescent bulbs
 - Various colour temperatures available
 - 360° light distribution angle
 - Excellent heat disperse
 - Environmental friendly



C35C +Housing



G45C



G45C +Housing



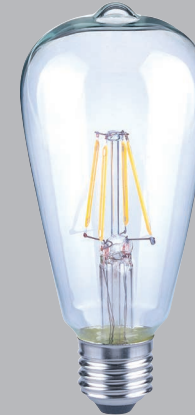
A60C



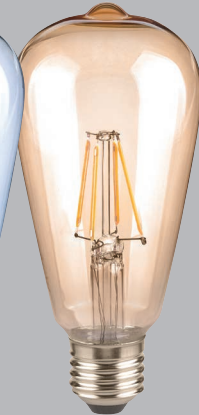
A67C +Housing



G95C +Housing



ST64C



ST64G

Model No.	Type	Lumen	Wattage	Incandescent Equivalent	Filament	Voltage	Size (mm)	Base
C35C 1.3W	C35C +Housing	120 lm	1.3 W	15	1 pcs	100-240V	Ø35 X 116	E14
C35C 2W	C35C +Housing	220 lm	2 W	25	2 pcs	100-240V	Ø35 X 116	E14
C35C 4W	C35C +Housing	440 lm	4 W	40	4 pcs	100-240V	Ø35 X 116	E14
G45C 1.3W	G45C +Housing	120 lm	1.3 W	15	1 pcs	100-240V	Ø45 X 110	E14
G45C 2W	G45C	220 lm	2 W	25	2 pcs	100-240V	Ø45 X 84	E27
G45C 4W	G45C	440 lm	4 W	40	4 pcs	100-240V	Ø45 X 84	E27
G95C 12W	G95C +Housing	1400 lm	12 W	140	6L pcs	100-240V	Ø95 X 157	E27

Model No.	Type	Lumen	Wattage	Incandescent Equivalent	Filament	Voltage	Size (mm)	Base
A60C 4W	A60C	470 lm	4 W	40 W	4 pcs	100-240V	Ø60 X 105	E27
A60C 6.5W	A60C	810 lm	6.5 W	60 W	4 pcs	100-240V	Ø60 X 105	E27
A60C 8W	A60C	1000 lm	8 W	71 W	6 pcs	100-240V	Ø60 X 105	E27
A67C 12W	A67C +Housing	1500 lm	12 W	98 W	6L pcs	100-240V	Ø67 X 130	E27
ST64G 4W	ST64G	400 lm	4 W	35 W	4 pcs	100-240V	Ø64 X 143	E27
ST64C 6.5W	ST64C	803 lm	6.5 W	60 W	4 pcs	100-240V	Ø64 X 143	E27



REACH ErP RoHS

Tolerance of product dimension Length ± 2mm / Diameter ± 0.5mm



MR16 / JCDR

LED Dichroic Reflector

Technical Advantages

- Long lifespan (20000hrs)
- The highest energy efficiency (A+)
- High colour rendering
- Zero UV emission
- Save 85-90% energy compare with incandescent bulbs

Product features

- Direct replacement halogen dichroic
- Excellent heat disperse
- Environmental friendly



MR16 COB



JCDR COB

Non-dimmable version

Model No.	Type	Lumen	Wattage	Incandescent Equivalent	Voltage	Beam Angle	Size (mm)	Base
LMR16 3.5W	MR16 COB	230 lm	3.5 W	20 W	12V	30°	Ø50 x 45	GU5.3
LMR16 5W	MR16 COB	350 lm	5 W	35 W	12V	30°	Ø50 x 45	GU5.3
LJCDR 1.8W	JCDR COB	105 lm	1.8 W	20 W	220-240V	36°	Ø50 x 53	GU10
LJCDR 3.5W	JCDR COB	230 lm	3.5 W	35 W	220-240V	36°	Ø50 x 53	GU10
LJCDR 4.5W	JCDR COB	345 lm	4.5 W	50 W	220-240V	36°	Ø50 x 53	GU10

Dimmable version

Model No.	Type	Lumen	Wattage	Incandescent Equivalent	Voltage	Beam Angle	Size (mm)	Base
LJCDR 4W DIM	JCDR COB	230 lm	4 W	35 W	220-240V	36°	Ø50 x 53	GU10
LJCDR 5W DIM	JCDR COB	345 lm	5 W	50 W	220-240V	36°	Ø50 x 53	GU10



Energy Class



2700K



4000K



6500K



15000 hrs



>80



RoHS

REACH

ErP

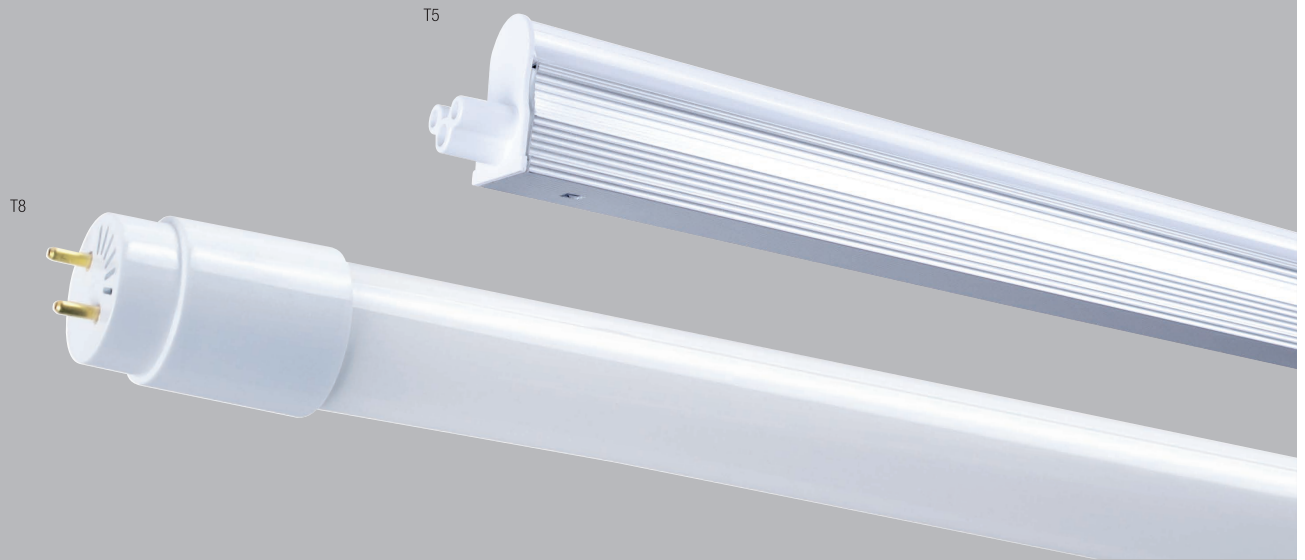
Tolerance of product dimension Length ± 2mm / Diameter ± 0.5mm



T8 / T5
LED Tube

T8 & T5
LED Tube

- Technical Advantages
- Long lifespan (50000hrs)
 - The highest energy efficiency (A++)
 - High luminous efficacy (100lm/W)
 - High colour rendering
 - Mercury free
 - Zero UV emission
 - Environmental friendly



T8 Tube

Model No.	Type	Lumen	Wattage	Length	Voltage	Base
MT8X79-6	T8	1200 lm	12 W	2 ft	220-240V	G13
MT8X79-9	T8	1400 lm	14 W	3 ft	220-240V	G13
MT8X79	T8	1900 lm	19 W	4 ft	220-240V	G13
MT8X79-15	T8	2200 lm	22 W	5 ft	220-240V	G13
MT8X20-6A	T8	1200 lm	12 W	2 ft	220-240V	-
MT8X20	T8	1900 lm	19 W	4 ft	220-240V	-

T5 Tube

Model No.	Type	Lumen	Wattage	Length	Voltage
MT5X02-3	T5	450 lm	5 W	1 ft	100-277V
MT5X02-6	T5	1200 lm	12 W	2 ft	100-277V
MT5X02-9	T5	1400 lm	14 W	3 ft	100-277V
MT5X02	T5	1900 lm	19 W	4 ft	100-277V



REACH ErP RoHS

Tolerance of product dimension Length \pm 2mm / Diameter \pm 0.5mm



Address : 1/F Green 18, No.18 Science Park
East Avenue, Shatin, Hong Kong

Tel : (852) 23452772 Web : www.stll.com
Fax : (852) 23574860 Email : info@stll.com

